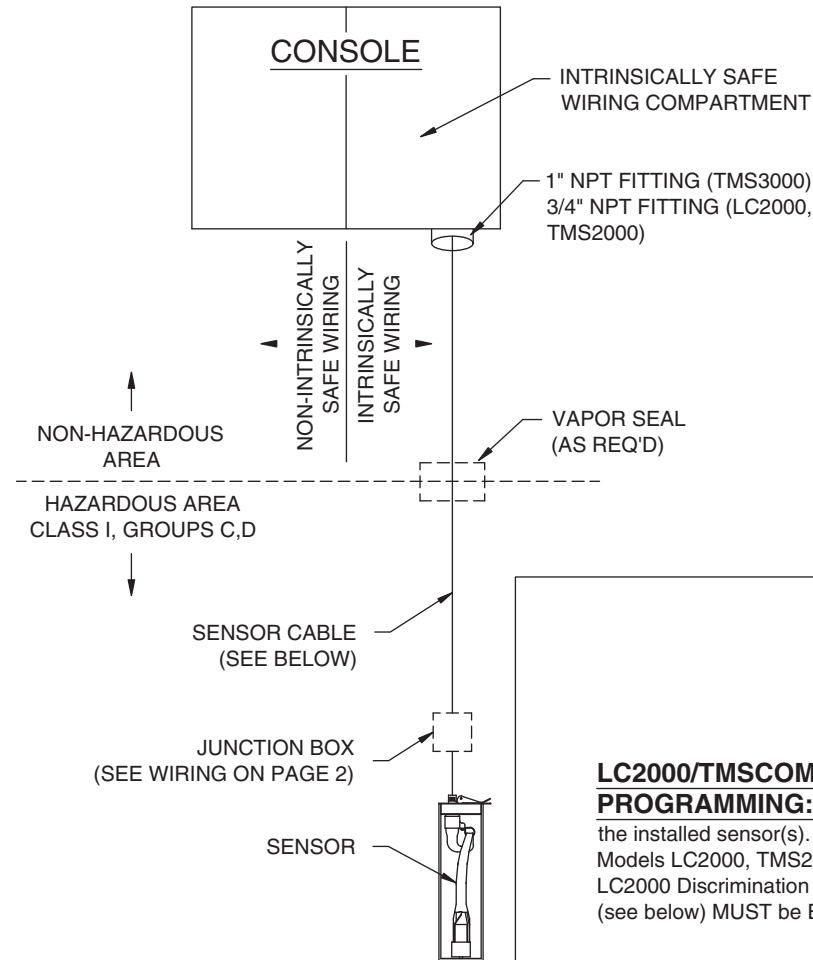


INSTALLATION, PROGRAMMING AND WIRING - HS100D (DISCRIMINATING **)

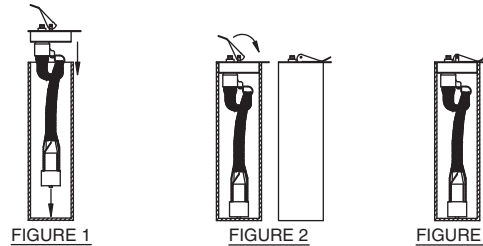


SENSOR INSTALLATION

IT IS RECOMMENDED THAT A SENSOR BE PERMANENTLY INSTALLED IN EACH WELL TO PROVIDE ACCURATE RESULTS AND THE MOST COMPLETE MONITORING OF THE SITE.

1. REMOVE ANY EXISTING CAP FROM 4" SCHEDULE 40 OPENING.
2. LOWER SENSOR INTO OPENING UNTIL SENSOR BOTTOMS.
3. ALLOW ANY EXCESS SENSOR LENGTH TO HANG LOOSELY IN A LOOP FROM THE RETAINER.
4. INSERT SENSOR CAP INTO PIPE (FIGURE 1).
5. PUSH LEVER DOWN (FIGURE 2).
6. PADLOCK IF NECESSARY (FIGURE 3).

LOCK NOT SUPPLIED



PROGRAMMING (CONT'D ON PAGE 2)

LC2000/TMSCOMM SOFTWARE

PROGRAMMING: Configure the console to activate the installed sensor(s). Programming is as follows for Models LC2000, TMS2000 and TMS3000. In addition, the LC2000 Discrimination Sensor Enables Dip Switches (see below) **MUST** be ENABLED where applicable.

MAIN MENU	SUB MENU	MODEL HS100D	
		ENTRY 1	ENTRY 2
CONFIG	CONTACT CLOSURE INPUTS	PGM ITEMS	
		ISCC ENABLE	ALARM
		SENSOR TYPE	HS100
		SENSOR MODE	LEAK
		INPUT NAME	OIL
		FAULT DETECTION	NO
		NORMALLY	CLOSED
			ALARM
			OTHER
			LEAK
			WELL
			NO
			CLOSED *

THESE PGM ITEMS FOR TMS SERIES ONLY

PROGRAM Mode LED Indicators

SENSOR	OFF = DISABLED, ON (2 Fast Blinks) = ALARM, ON (3 Slow Blinks) = RELAY
NO/NC	OFF = NC, ON = NO
FAULT DETECT	OFF = DISABLED, ON = ENABLED

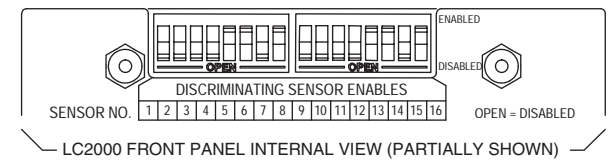
LC2000 FRONT PANEL PROGRAMMING:

Configure the LC2000 to activate the installed sensor(s). In addition, the Discrimination Sensor Enables Dip Switches **MUST** be ENABLED where applicable.

MODEL HS100D

ENTRY 1	ENTRY 2
ALARM	ALARM
OFF	OFF *
OFF	OFF

ENABLE THE CORRESPONDING **ENTRY 1 (OIL)** DIP SWITCH FOR EACH DISCRIMINATING HS100D SENSOR



CABLE SELECTION:

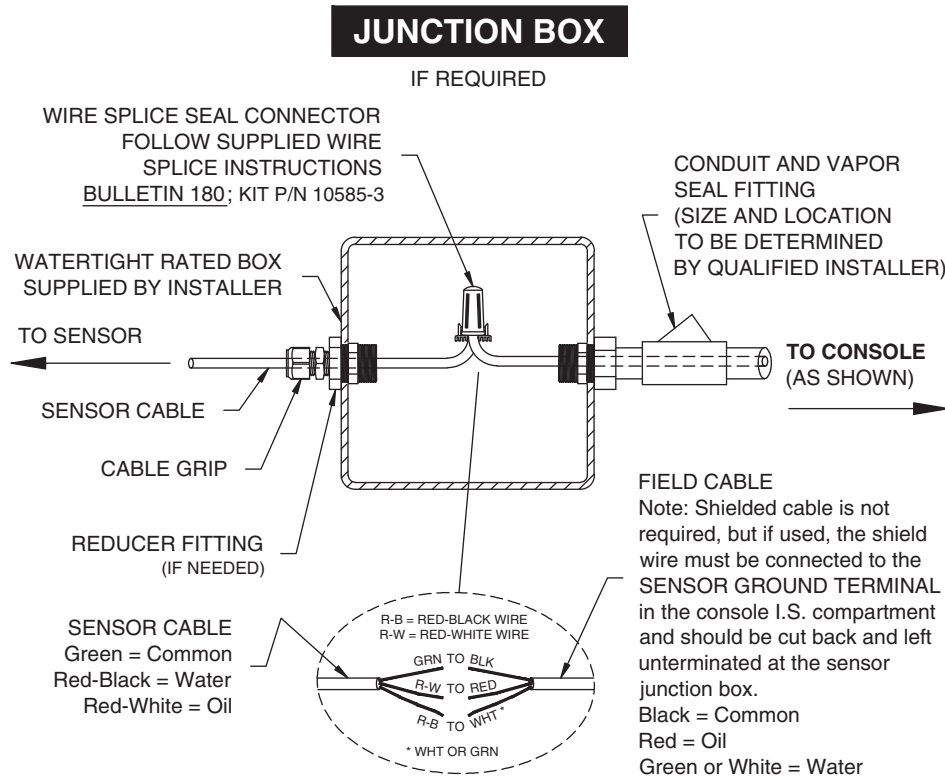
Use Belden 8443, Alpha 1173C or any equivalent 3-conductor, 22 AWG cable, refer to console installation manual for more cable selection and limitation information. Shielded cable is not required, but if used, the shield wire must be connected to the SENSOR GROUND TERMINAL in the console I.S. compartment and should be cut back and left unterminated at the sensor junction box.

* WATER TABLE PRESENT
** SEE DRAWING 50411 FOR NON-DISCRIMINATING

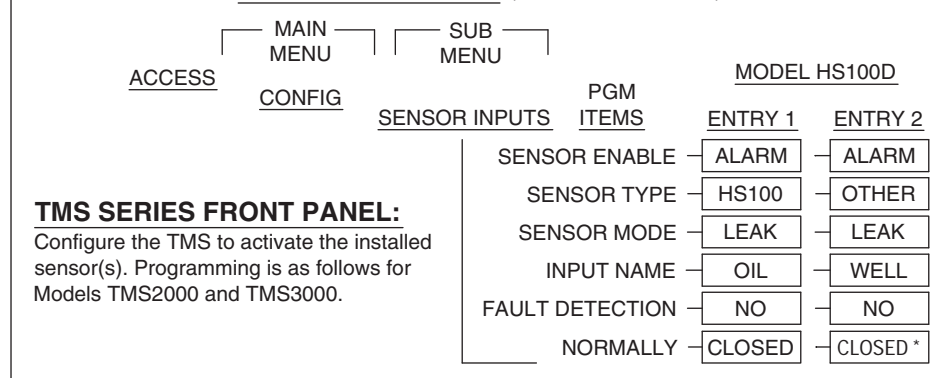
PNEUMERCATOR
Liquid Level Control Systems

INSTALLATION, PROGRAMMING AND WIRING - HS100D (DISCRIMINATING **)

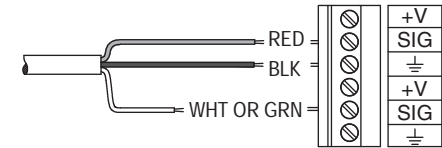
TYPICAL WIRING



PROGRAMMING (CONT'D ON PAGE 1)

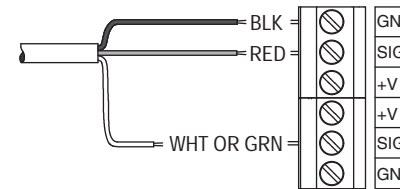


LC2000



TMS3000

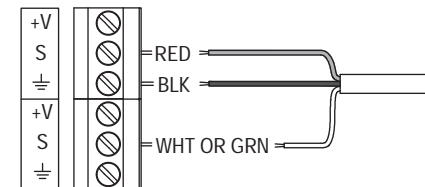
4-PROBE/8-SENSOR CARD WIRING



16-SENSOR CARD WIRING



TMS2000



NOTE: "S" = SIGNAL AND IS CONSECUTIVELY NUMBERED ON THE CIRCUIT BOARD "S1" THROUGH "S8"

* WATER TABLE PRESENT
** SEE DRAWING 50411 FOR NON-DISCRIMINATING