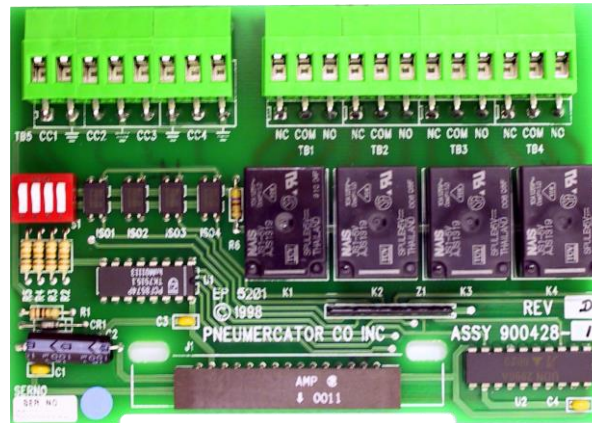


4 Fully Programmable Dry Contact Inputs and Relay Outputs



Product Description

The 4 Input/4 Relay Output Card is a field upgradeable plug-in option for both the TMS Series Tank Management Systems and LC2000 Series Leak and Point Level Alarm Console that provides four (4) dry contact inputs and four (4) 1 Form C relay contact outputs. All I/O channels are uncommitted and fully programmable via the console front panel* or any of the available communications interfaces. Each input is optically isolated and programmable for relay control and alarm functions as well as remote relay acknowledgement or gating functions. Inputs may also be programmed to monitor submersible pump or generator activity in conjunction with the TMS Series AUTO LEAK TEST mode**. Each relay output is programmable to trigger on any combination of events, including in-tank leak**, theft*, product or water setpoints*, leak or point level sensor alarm, contact closure input or system error. Additionally, relays are individually programmable for failsafe mode; delayed shutoff mode and a latching mode for pump up/down functions. Typical relay applications include remote annunciation, pump and siphon break/flow control valve operation, and other user-defined switch closure inputs. These relays provide a simple and straightforward interface to most programmable logic controllers, building management systems, and similar input monitoring devices.

Applications

- Remote Annunciators: Overfill, High, Low, Leak
- Pump Up/Down using latching relay mode
- Siphon Break/Flow Control Valves
- TMS AUTO LEAK TEST**
- Backup Generator Run Monitoring
- Pump Fail Status
- BMS/PLC Interface
- User-defined Switch Closure Inputs

Specifications

- Input Type: Dry Contact, Optically-Isolated, Programmable
- Output Type: Relay, Dry Contact, Programmable, UL/CSA listed
- Relay Contacts: 1 Form C, Rated: 10 A @ 120 VAC; 6 A @ 240 VAC
- Maximum Wire Gauge: 12 AWG
- Input Modes: Alarm, Relay, Gate, Acknowledge, Combinatorial, Delayed
- Output Triggers: Site-specific alarms: Theft*, System Errors, System Power Failure
Tank Alarms: In-tank Leak**, Product and Water Setpoints*
Leak/Point Level Sensor Alarms
Contact Closure Inputs
Note: Each trigger event can control up to three (3) separate relays
- Output Modes: Failsafe, Latching, Delayed Shutoff, Front Panel Acknowledge
- System Requirements: One (1) Non-hazardous I/O Expansion Slot

Model Numbers

- 900428-1 for TMS3000
- 900463-1 for TMS2000, TMS2000W, TMS2000A1, TMS2000A2, LC2000, TX1064-1

* TMS Series Only

** TMS2000/3000 Only

Note: Specifications subject to change w/o notice. 04-01-2015