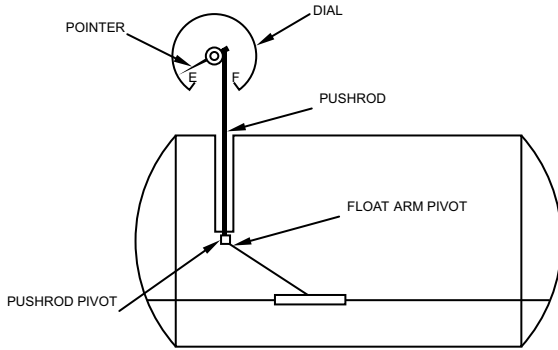


ORDERING SPECIFICATIONS

REQUIRED INFORMATION

CAPACITY		TANK MODEL	
INSIDE DIAMETER		TANK MANUFACTURER	
WALL THICKNESS		TANK TYPE (STEEL OR FIBERGLASS)	
OUTSIDE DIAMETER		MOUNTING INSTALLATION (FIGURE No.)	
OVERALL LENGTH OUTSIDE		SPECIFIED HEIGHT (INCLUDE MANWAY HEIGHT)	
TYPE OF ENDS		GAUGE POSITION	
DIAL (GALLONS, INCHES, OTHER)		MATERIAL (ALUMINUM & BRASS, STAINLESS STEEL)	
TANK CONTENTS			



INSTALLATION

Installation of the tank gauge is accomplished through a 2" half coupling in the tank. The 2" nipple and gauge mounting flange are supplied. The gauge can be mounted in any 90 degree position specified.

APPLICATIONS

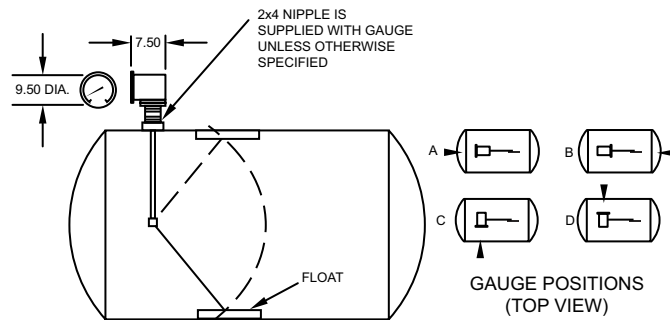
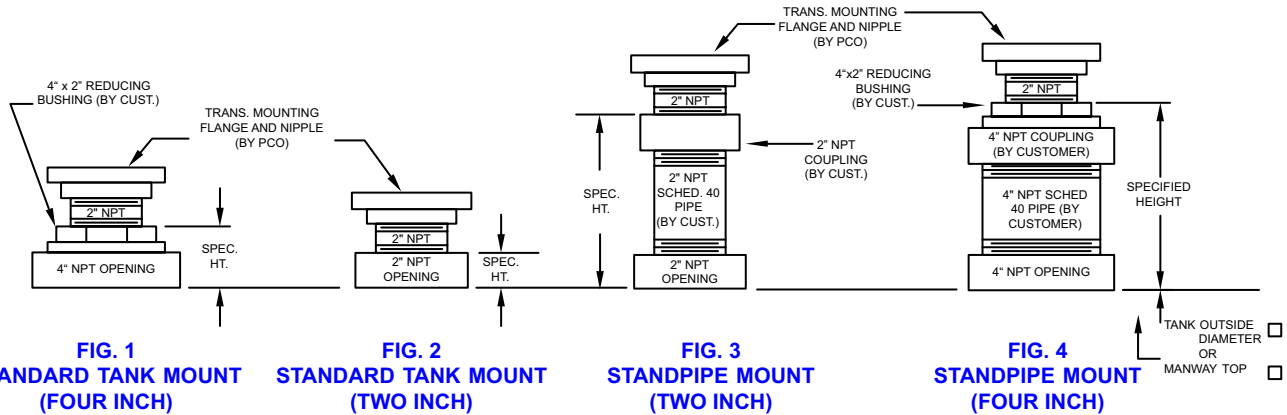
Suitable for above ground or buried tanks, either indoor or outdoor. The wetted parts are of materials compatible with all hydrocarbons or non-corrosive liquids. Stainless steel or brass construction of immersed parts is available for special applications

PRINCIPLE OF OPERATION

The float and arm assembly responds instantly to the slightest change in liquid level in the tank. These changes are transmitted by direct linkage to the indicating pointer, providing positive direct measurement of tank contents.

SUGGESTED SPECIFICATION

Suggested specification: Provide and install for each tank a Pneumercator 8-inch Direct Reading Gauge. The Instrument shall be calibrated in gallons (or any other unit of measurement). The gauge head to be mounted (vertical) on the tank.



VERTICAL TYPE

PNEUMERCATOR
Liquid Level Control Systems

1785 Expressway Drive North, Hauppauge, NY 11788
TEL: (631) 293-8450 • FAX: (631) 293-8533
www.pneumercator.com

Distributed By: