

TMS4000

Tank Management System with 10.4" Color Touchscreen
Designed for Indoor and Outdoor Installations

**Modular, Multi-Tank Gauging System w/Easy-to-Navigate
10.4" Color Touch Screen for Applications up to 48 Tanks**



Wall-Mount

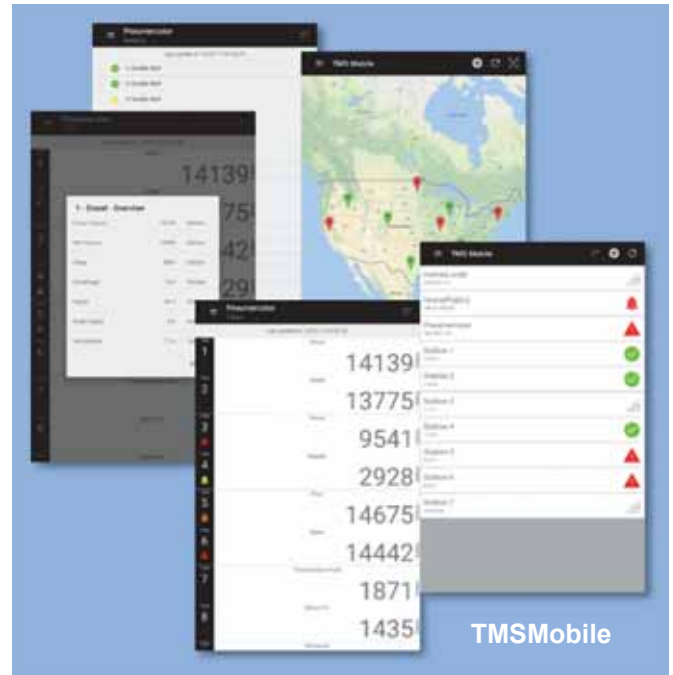


Panel-Mount

The TMS4000 Tank Management System is the latest generation of the TMS family, and the first touchscreen-based system in the industry available for both indoor and outdoor installation without requiring a secondary enclosure or supplemental heating/cooling. The large, 10.4" color, SVGA display provides an extremely easy-to-use graphical interface with real-time tank measurement data presented in three distinct formats; easy-to-read meters, detailed spreadsheet and quick-view bar graphs. Each format is user-configurable, and the spreadsheet display prioritizes active or alarming tanks to the top of the window. Leak sensor statuses and alarm acknowledgement are just one touch away. Simply put, the easiest to navigate in the industry! Existing TMS2000 and TMS3000 users, we've thought of you, too! The TMS4000 was designed to work with all your existing probes and sensors, and even your plug-in option cards! The TMS4000, next generation ATG from Pneumercator designed and built to the same high performance and reliability standards we've been manufacturing for over 100 years.



- Support for up to 48 precision, dual-float magnetostrictive level probes, or varying combinations of level probes and leak sensors. Rigid or flexible probes for sub-base tank heights from 8"[200mm] to bulk tank heights of 70'[21M].
- Plug-In Relay I/O Cards provide up to 64 relay outputs with extensive relay and contact closure input programming options.
- Standard communications interfaces include Ethernet TCP/IP, USB host and client, RS232(2 standard, expandable to 6) and RS485. Single, dual or quad ModBus, 4-20ma and other industrial protocols are supported.
- Chemically treated, 7H hardness, full glass touch screen provides high durability and extreme clarity. For outdoor installation, glove-touchable and guaranteed not to fog.
- Dedicated POWER, NORMAL, ALARM LEDs, and ALARM ACKNOWLEDGE and Display Brightness touch buttons.
- Lockable metal enclosure, NEMA 12 dustproof standard, NEMA 4X weatherproof/corrosionproof optional. Both available in wall-mount or panel-mount versions.



- Front panel-mounted, weatherproof USB flash drive connector standard for NEMA 4X enclosure, optional on NEMA 12.
- Inspector's report can be printed to a PDF file on a removeable flash drive.
- Optional thermal or impact printer is field-upgradeable. Landscape, 116-character wide inventory reports.

- TMSmobile application for Android phones
- E-mail and SMS text message alerts
- In-Field localization settings include operation in English, Spanish or French, with Metric(LT/mm) or English(Gal/in) units of measure.
- Encrypted SD card Log Reports database exportable in standard CSV format.
- Extensive system security settings allow the administrator to assign users with widely varying degrees of accessibility.
- Auto-switching universal power supply operates with any line voltage between 95-250VAC, 50/60Hz. DC input options available.
- Operating temperature -22°F[-30°C] to 160°F[70°C] for non-printer units, -5°F[-20°C] to 140°F[60°C] with printer.
- Upgrade path for existing TMS2000 and TMS3000 users. Use your existing probes, sensors and most plug-in cards.
- UL/cUL approved, file # E139464

Current Tank Inventory											
Smiths Tank Farm		Site ID: 10352		Unit ID: 1		Report Date: 10/ 4/2018 10:35					
Tank ID	Tank Name	Status	Alarms	Gross Vol Gal	Net Vol Gal	% Vol	Ullage Gal	Product Height In	Water Height In	Temp ° F	
1	Diesel			14081	13969	70.4	3918	54.2	1.1	77.6	
2	Diesel			13692	13591	68.4	4307	52.7	1.8	76.3	
3	Diesel			9458	9390	47.2	8541	36.4	.8	76.0	
4	Diesel		High Water	35409	35153	59.0	18590	59.0	2.3	76.0	
5	Regular		Low Prod	2866	2836	19.1	10633	14.7	.6	76.0	
6	Plus	Leak Test IP		12314	12181	82.0	1185	63.2	1.2	76.6	
7	Super		Crit High Prod	14399	14240	95.9	0	73.9	.8	76.9	
8	Transmission Oil			1855	1841	46.3	1744	35.7	.4	76.1	

Landscape Inventory Print