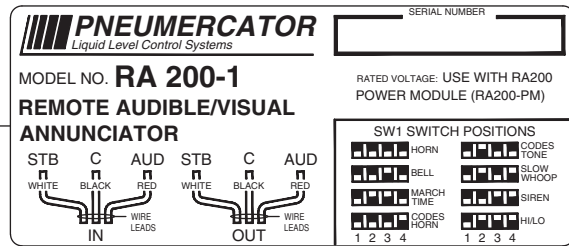


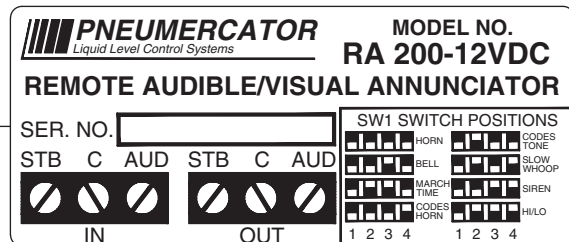
WIRING DRAWING - RA200¹ TO LC2000 & TMS SERIES

¹"RA200" CAN ALSO BE WRITTEN AS "RA200-1"

NEW PRODUCT LABEL (ENLARGED FOR CLARITY)



OR ORIGINAL PRODUCT LABEL (SHOWN FOR REF.)

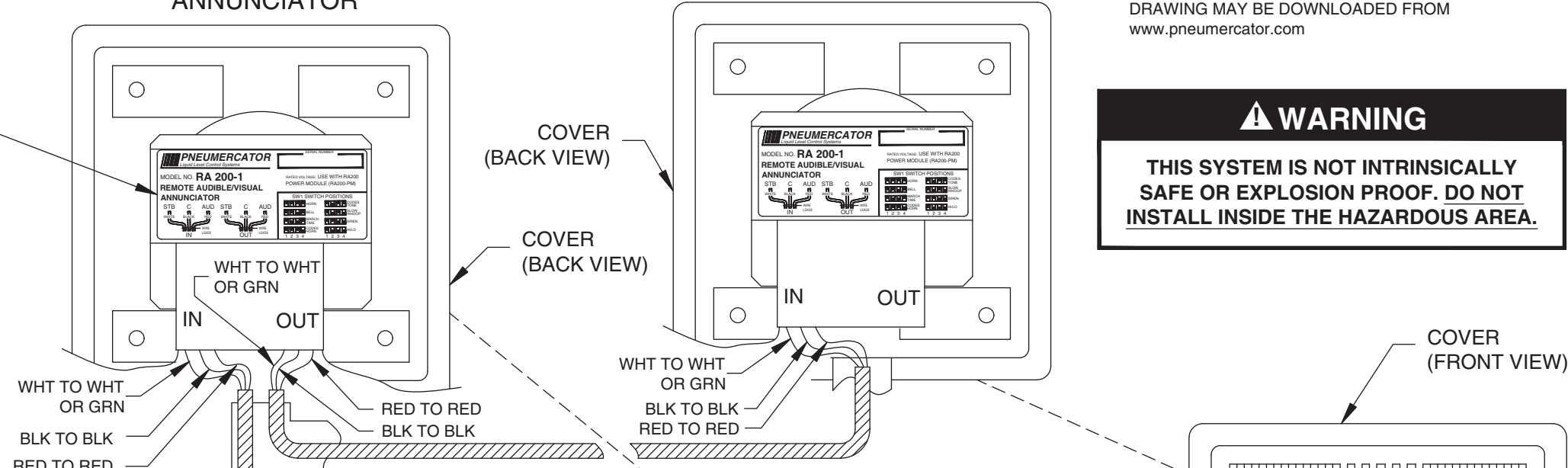


** RA200 REMOTE AUDIBLE/VISUAL ANNUNCIATOR

** RA200 OPTIONAL (TYP. FOR MULTIPLE LOCATIONS)

** MAXIMUM (2) RA200 PER POWER MODULE. INSTALL SO THAT THE DRIP HOLES ARE LOCATED ON THE BOTTOM (SEE OUTLINE DRAWING 10494). IF NOT SUPPLIED, DRAWING MAY BE DOWNLOADED FROM www.pneumercator.com

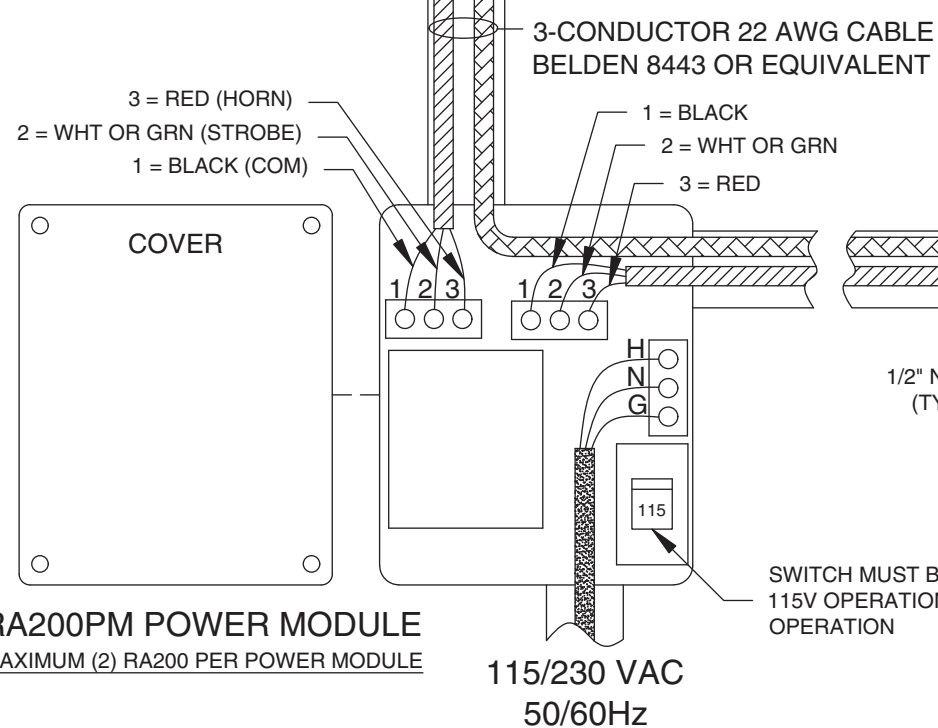
WARNING
THIS SYSTEM IS NOT INTRINSICALLY SAFE OR EXPLOSION PROOF. DO NOT INSTALL INSIDE THE HAZARDOUS AREA.



TO LC2000/TMS (SEE PAGE 2)

TO RELAY OUTPUTS

TO CONTACT CLOSURE INPUTS



RA200PM POWER MODULE
MAXIMUM (2) RA200 PER POWER MODULE

115/230 VAC
50/60Hz

SWITCH MUST BE SET TO 115V FOR 115V OPERATION AND 230V FOR 230V OPERATION

1/2" NPT (TYP.)

1 = RED (TEST)
2 = BLACK (COM)
3 = WHT OR GRN (RESET)

JUNCTION BOX (BY CUSTOMER)
MUST BE WATERTIGHT IF LOCATED OUTDOORS

RS2
REMOTE SWITCH

3 COND. CABLE	COND. COLOR	FUNCTION
	RED	TEST (N.O.)
	BLACK	SWITCH COMMON
	W OR G	RESET (N.O.)
	RED	HORN
	BLACK	HORN/STROBE COMMON
	W OR G	STROBE

"W" = WHITE; "G" = GREEN



Questions? Contact Technical Support at (800) 209-7858

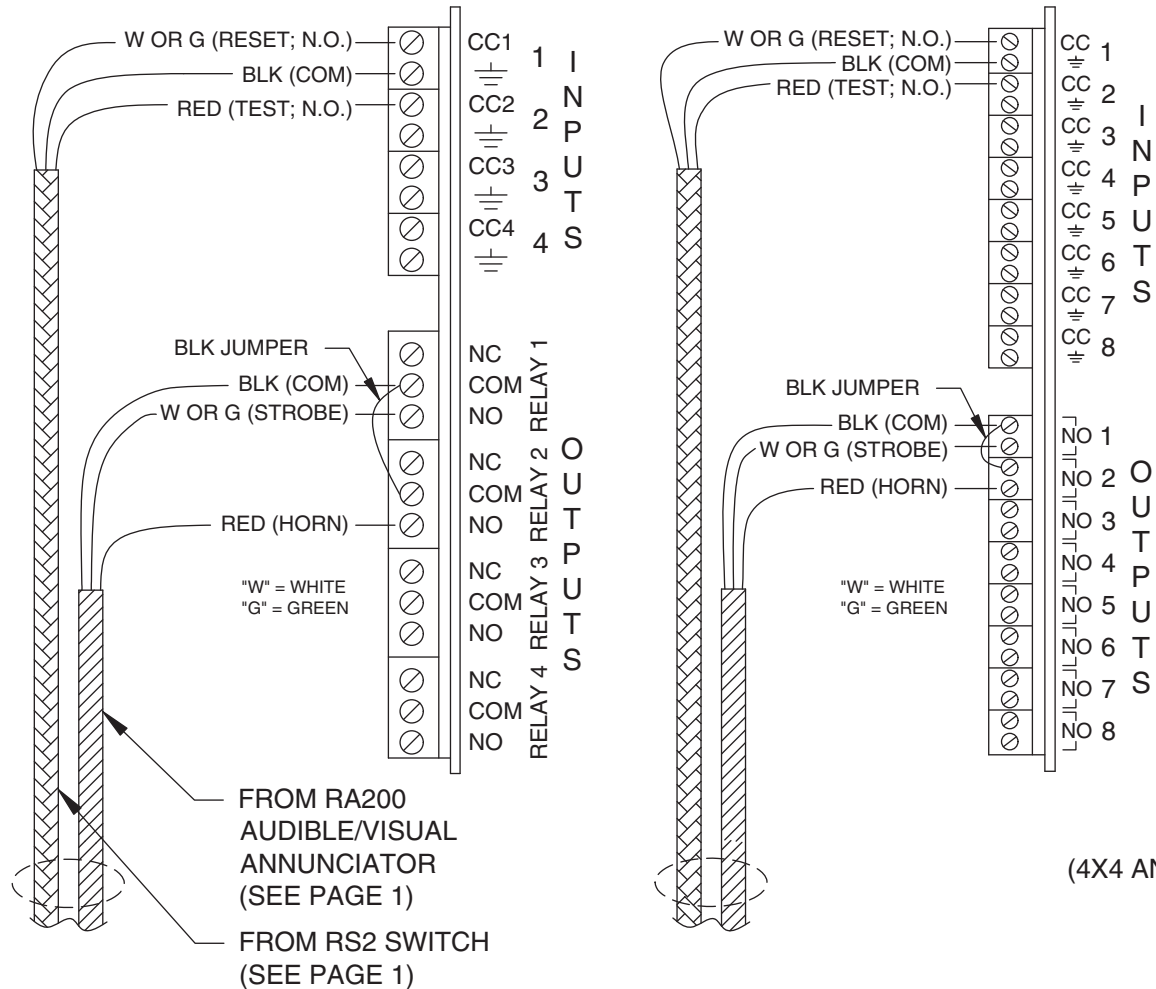
WIRING DRAWING - RA200¹ TO LC2000 & TMS SERIES

¹"RA200" CAN ALSO BE WRITTEN AS "RA200-1"

TMS3000/TMS4000

WIRING TERMINATION EXAMPLES SHOWN FOR REFERENCE
(SEE NOTES)

4X4 RELAY I/O CARD --- OR --- 8X8 RELAY I/O CARD



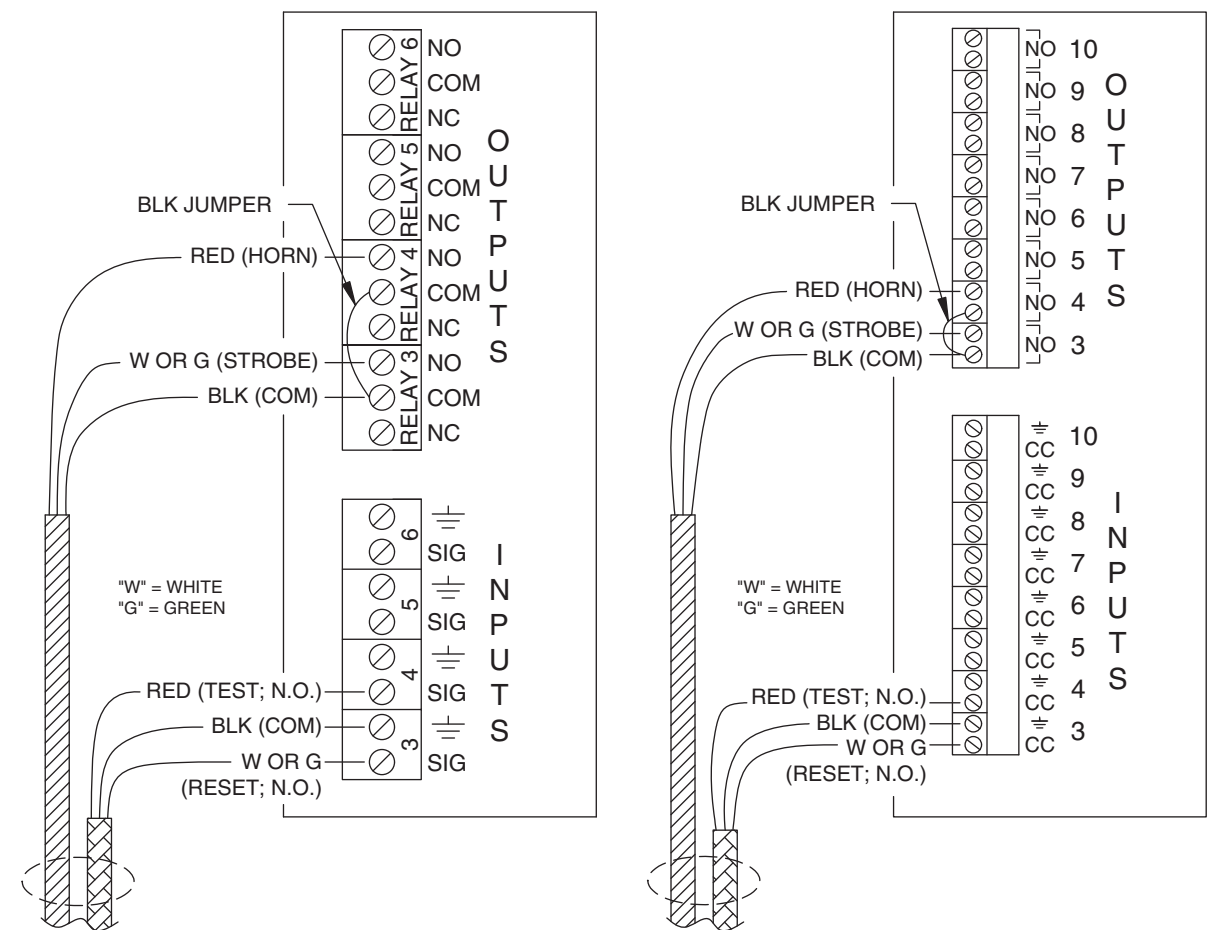
- NOTES:**
1. WIRING MAY BE TERMINATED ON ANY TMS RELAY INPUT/OUTPUT. HOWEVER, IF REQUESTED WITH ORDER, WIRING MUST BE TERMINATED ON THE SPECIFIED PRE-PROGRAMMED INPUTS/OUTPUTS (I/Os). REMINDER: PROGRAMMING STARTS WITH THE BUILT-IN MAIN BOARD RELAY I/Os FOR LC2000, TMS2000 AND TMS4000M. THE TMS4000M MAIN BOARD RELAY I/Os LAYOUT IS NOT SHOWN BUT IS THE SAME OR SIMILAR 2X2 I/Os AND TERMINAL BLOCK MARKINGS/NAMES AS SHOWN ABOVE.
 2. DO NOT MODIFY LC2000/TMS ENCLOSURE. USE DESIGNATED CONDUIT KNOCKOUTS/OPENINGS AS SHOWN IN THE LC2000/TMS INSTALLATION MANUAL.

50214 Rev. J (11/23/21)

LC2000/TMS2000/TMS4000M

WIRING TERMINATION EXAMPLES SHOWN FOR REFERENCE
(SEE NOTES)

OR --- *4X4 (10A) RELAY I/O CARD --- OR --- *8X8 RELAY I/O CARD



* 4X4 (5A) RELAY I/O CARD (TMS4000M ONLY) SAME LAYOUT AS 8X8 CARD EXCEPT THE NUMBER OF INPUTS/OUTPUTS. THE TMS4000M DOES NOT SUPPORT 4X4 (10A) AND 8X8 RELAY I/O CARDS

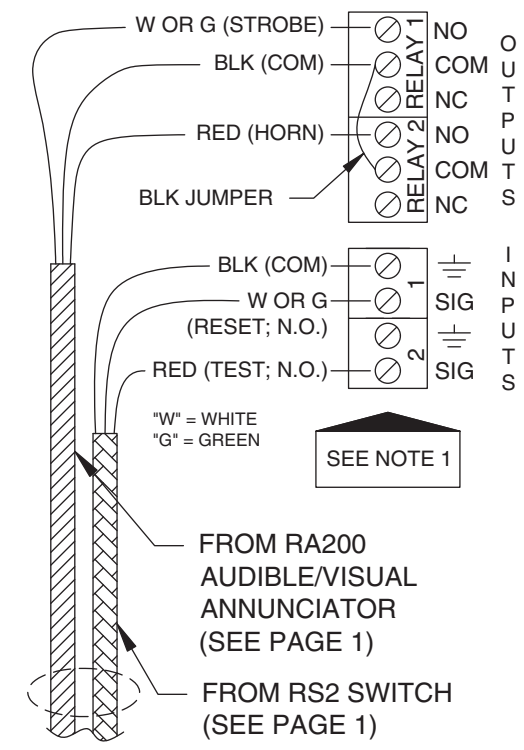
3 COND. CABLE	COND. COLOR	FUNCTION
▨	RED	TEST (N.O.)
	BLACK	SWITCH COMMON
▧	W OR G	RESET (N.O.)
	RED	HORN
	BLACK	HORN/STROBE COMMON
	W OR G	STROBE

*W = WHITE; *G = GREEN

Questions? Contact Technical Support at (800) 209-7858

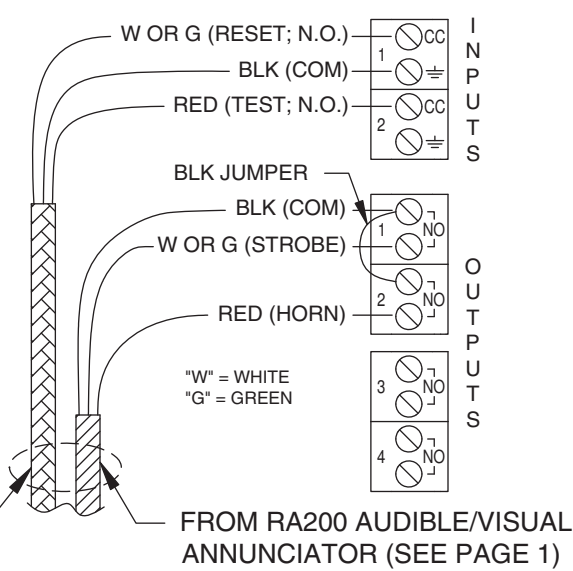
Page 2 of 2

MAIN BD. RELAY I/Os



TMS1000 (4X4 AND 8X8 RELAY CARDS ARE NOT SUPPORTED)

MAIN BD. RELAY I/Os



FROM RS2 SWITCH (SEE PAGE 1) FROM RA200 AUDIBLE/VISUAL ANNUNCIATOR (SEE PAGE 1)